



PR3 Monoclonal Antibody

Catalog No	YP-Ab-13821
Isotype	IgG
Reactivity	Human
Applications	WB;ELISA
Gene Name	PRTN3
Protein Name	Myeloblastin
Immunogen	Purified recombinant fragment of human PR3 expressed in E. Coli.
Specificity	PR3 Monoclonal Antibody detects endogenous levels of PR3 protein.
Formulation	Ascitic fluid containing 0.03% sodium azide, 0.5% BSA, 50% glycerol.
Source	Monoclonal, Mouse
Purification	Affinity purification
Dilution	Western Blot: 1/500 - 1/2000. ELISA: 1/10000. Not yet tested in other applications.
Concentration	1 mg/ml
Purity	≥90%
Storage Stability	-20°C/1 year
Synonyms	PRTN3; MBN; Myeloblastin; AGP7; C-ANCA antigen; Leukocyte proteinase 3; PR-3; PR3; Neutrophil proteinase 4; NP-4; P29; Wegener autoantigen
Observed Band	
Cell Pathway	Cytoplasmic granule . Secreted . Cell membrane ; Peripheral membrane protein ; Extracellular side . Membrane raft ; Peripheral membrane protein ; Extracellular side . Localizes predominantly to azurophil granules (primary secretory granules) in neutrophils (PubMed:2033050, PubMed:3198760, PubMed:7897245, PubMed:18462208). Secreted upon neutrophil stimulation by TNF-alpha, lipopolysaccharide (LPS), fMLP and CXCL8/IL8 or during neutrophil transmigration (PubMed:22266279, PubMed:28240246). Following secretion tethered to the cell membrane by CD177 (PubMed:18462208, PubMed:22266279). .
Tissue Specificity	Expressed in polymorphonuclear leukocytes (at protein level) (PubMed:2033050, PubMed:7897245, PubMed:3198760). Expressed in neutrophils (at protein level) (PubMed:28240246, PubMed:18462208, PubMed:21193407, PubMed:22266279, PubMed:17244676). Expressed in differentiating neutrophils (PubMed:18462208).
Function	catalytic activity:Hydrolysis of proteins, including elastin, by preferential cleavage: -Ala-[Xaa- > -Val-[Xaa-,function:Polymorphonuclear leukocyte serine protease that degrades elastin, fibronectin, laminin, vitronectin, and collagen types I, III, and IV (in vitro) and causes emphysema when administered by tracheal insufflation to hamsters.,online information:Proteinase 3 entry,similarity:Belongs



to the peptidase S1 family. Elastase subfamily.,similarity:Contains 1 peptidase S1 domain.,

Background

catalytic activity:Hydrolysis of proteins, including elastin, by preferential cleavage: -Ala-|-Xaa- > -Val-|-Xaa-.,function:Polymorphonuclear leukocyte serine protease that degrades elastin, fibronectin, laminin, vitronectin, and collagen types I, III, and IV (in vitro) and causes emphysema when administered by tracheal insufflation to hamsters.,online information:Proteinase 3 entry,similarity:Belongs to the peptidase S1 family. Elastase subfamily.,similarity:Contains 1 peptidase S1 domain.,

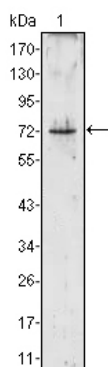
matters needing attention

Avoid repeated freezing and thawing!

Usage suggestions

This product can be used in immunological reaction related experiments. For more information, please consult technical personnel.

Products Images



Western Blot analysis using PR3 Monoclonal Antibody against PRTN3 (aa28-256)-hIgGFc transfected HEK293 cell lysate (1).